

TAKE THE EASY WAY HOME TO, FROM AND AROUND CLEVELAND

Cleveland is strategically located to maximize access to more than half of the U.S. Fortune 500 headquarters in the United States and 43% of the nation's population. Fed by an ample supply of interstate highways, our region hosts a wide variety of transportation assets, including public transit, commercial rail, international and commuter airports, and a growing port that is a leader among its Great Lakes peers.

A headquarters located in Cleveland is well positioned to serve significant portions of the nation. Cleveland is within a day's drive and an hour's flight to nearly half of the country's population and a third of Canada's.

Air Travel

Cleveland is home to two full-service airports – Cleveland Hopkins International Airport and Burke Lakefront Airport. Additionally, Cuyahoga County Airport is less than 16 miles away from downtown, and the Akron-Canton Regional Airport is less than one hour and just 50 miles south of downtown Cleveland.

Downtown Cleveland is connected by 11 miles of interstate to Cleveland Hopkins. Total travel time to Cleveland Hopkins from the central business district is less than 20 minutes by car and less than 30 minutes via public transit. Burke Lakefront is located immediately adjacent to the central business district and is accessible in less than five minutes by car, or 15 minutes by transit or walking. Together, the four airports serve over 50 North American markets and international destinations, including New York City, Washington D.C., San Francisco, Seattle, Toronto and Reykjavik, Iceland. Cleveland Hopkins is currently in direct communications with two additional international providers.

Public Transportation

Public transit is an important aspect of any transportation network, and Cleveland's public transit system is the largest in Ohio and one of the largest in the United States, serving more than 200,000 weekday customers and nearly 50 million annually. It features bus, commuter bus, bus rapid transit, light and heavy rail, paratransit, trolley and a water taxi. Our region boasts the nation's fourth-largest bus-rapid-transit system, which has received international acclaim and helped revitalize a key thoroughfare linking downtown to our world-class health care and cultural amenities.

Cleveland transportation plans include a future rail network expansion that will triple capacity. The plan will expand the current 37 miles of commuter rail to 111 miles, and stations will increase from 50 to 162. As Amazon's HQ2 home, Cleveland will accelerate the expansion to achieve build-out by 2029 in tandem with the development timetable. We are working to make one of the best systems in the country even better.

Initial build-out of Amazon HQ2 will be located in the center of downtown at the historic Post Office Plaza and Terminal Tower facilities. This location provides unmatched access to public transportation, as Cleveland's main public transit hub is located within the complex. The hub

ONLY CLEVELAND...

- Downtown access to three major interstates, two airports, three transit rail lines, two BRT lines, 50 bus routes and Amtrak
- 56% of Fortune 500 U.S. headquarters within an eight-hour drive
- 1.3 million residents can access public transportation in less than 10 minutes
- Seventh-fastest growth among U.S. cities for bike commuting
- Downtown walkability score of 91



WHY IT MATTERS TO AMAZON:

Cleveland's transportation infrastructure will provide a high quality of life for Amazon and its employees and convenient access to national and international business destinations.

provides direct rail access to Cleveland Hopkins and Burke Lakefront, Cleveland neighborhoods and surrounding suburban communities. In this location, employees will be able to directly access all modes of public transit, as the vast majority of routes begin and end there.

Passenger Vehicles and Private Vehicle Services

Our region enjoys a robust transportation system, anchored by nearly 11,000 miles of interstate highways, arterial and local roads. The roadway system was initially designed for a much larger centralized population, with the ability to easily absorb an additional million people region-wide. The primary interstates in our region are I-90, which is the longest interstate in the United States, I-77, I-71 and I-80, which is the only toll road in the region. Interstates that circumnavigate portions of our community include I-271, I-277, I-480 and I-490.

Amazon employees and visitors will enjoy some of the most convenient commutes of any major metropolitan area in the country. In Cleveland, the average commute is 23.1 minutes, largely due to morning and evening congested peak periods that last only 1.5 hours, and the average daily delay per capita due to traffic congestion is less than four minutes. Thus, Cleveland is one of the least congested cities in the nation.

Biking and Walking

Active transportation is another key piece of Cleveland's transportation system. With more than 860 miles of trails and other bicycle facilities and an expansive sidewalk coverage, the city has tremendous options to use to get around town.

Cleveland's bicycle commute rate is more than double the state average and has increased 238% since 2000. We have integrated bicycling with transit via a Rack-N-Roll program begun in the 1990s, which allows bicyclists to use a bike rack on the front bumper of every bus, and we have expanded it to rail and BRT. Last year, we launched the UH Bikes Cleveland Bike Share program, which includes 250 bikes at 29 fixed stations and seven "drop zones." This new program is expanding easy access to bicycles for visitors and residents alike. Cleveland also offers a full-service bicycle parking and commuting center. Referred to as The Bike Rack, it provides riders with services such as secure bike parking, lockers, showers, a repair shop and rentals all within a five-minute walk of the city's entertainment and sports venues.

Downtown Cleveland is also extremely walkable. The city's walk score of 91 is the highest designation by Walk Score and illustrates the ease with which people can navigate downtown. Additionally, Cleveland's bordering neighborhoods received high walk scores, allowing residents to easily commute to and from the city center. □

TRANSPORTATION BY THE NUMBERS



\$15.8 billion devoted to transportation improvements over the next 20 years



50+ markets and 7 international destinations served by 4 national airports



773 miles of on-road bicycle lanes and 453 miles of off-road trails



4TH largest bus-rapid-transit system



238% increase in bicycle commuting rate since 2000

LOGISTICS & TRANSPORTATION



Location. Location. Location. Cleveland is ideally situated for any corporate headquarters.

The Great Lakes region spurred the industrial revolution and drove the growth and development of the industrial midwest. Cleveland was at the forefront then, as the 5th largest city in the United States. This is where Rockefeller earned his fortune.

Furthermore, the opening of the St. Lawrence Seaway in 1959 established the Great Lakes region as an economic powerhouse. According to the Brookings Institution, if it stood alone as a country, the Great Lakes economy would be one of the largest on earth.

Thus, on the shores of Lake Erie, Cleveland will lead the second revolution, the one where technology, manufacturing and logistics intersect. From a transportation vantage, Cleveland is the best location in the nation.

Cleveland is within a day's drive or about an hour's flight to nearly half of the United State's population and 36 percent of Canada's population. The region is home to 20 *Fortune* 1000 companies.¹ Nearly 60 percent of U.S. *Fortune* 500 headquarters and nine (9) of 11 Canadian "Global 500" companies can be reached in less than a day by car.²

Choosing Cleveland provides optimal distance and distribution coverage from both coasts—including easy access to Canada's most populous city, Toronto (the fourth largest in North America).³ Major cities on the east or west coasts, such as Boston, are not optimally located and do not provide balanced access to the U.S. population. A variety of flights fly nonstop to the area, including the coasts and specifically Seattle, New York and Washington DC.

Cleveland is served by a robust public transit system which includes buses, trolleys, rail, express bus service, and more! A system of bike trails help cyclists navigate the region, connecting adjacent communities to Downtown and the north coast of the lake. Downtown Cleveland is adding trails to connect a network of world class parks, and inviting new housing complexes, restaurants, and retailers to make Downtown their home. Those without a car can rideshare, rent a bike, or walk (Downtown is incredibly walkable).

The city is enjoying the benefits of billions of dollars in new development and improvements. **Over the next 20 years, the region will invest \$15.8 billion in transportation improvements alone.**

¹ Major Institutions – 45 Minute Drive Time and Major Institutions - Downtown Cleveland Maps

² Regional Proximity - 8 Hour Drive Time Map

³ Population Coverage – Proposed Cleveland HQ Map

AIR TRAVEL IN CLEVELAND

Air travel is convenient and easy to navigate. The average travel time to Cleveland Hopkins International Airport (CLE) on the city's west side is only 20 minutes—besting nearby cities like Pittsburgh and Detroit by 5-10 minutes. CLE has many direct flights, including to and from most cities including Seattle, San Francisco, New York, and Washington, D.C. Comparatively, neighboring Columbus and Pittsburgh have NO direct flights to and from Seattle. The average airfare in Cleveland is \$355, well below cities like Cincinnati, Columbus, and Detroit whose average costs are above \$385.

Additionally, Burke Lakefront Airport (BKL) is located in Downtown Cleveland and provides easy access for business travelers and private aircraft. For those who choose to live in Cleveland's southern suburbs, access is equally as easy to Akron-Canton Airport (CAK), which like Hopkins has many direct flights and is only a mere 50 miles from Downtown Cleveland.

HIGHWAY SYSTEM IN CLEVELAND

The roadway system was initially designed for a much larger centralized population, with the ability to easily absorb an additional million people region wide. The area is home to 10,978 miles of interstate, arterial and local roads. Included is Interstate 90 through Downtown Cleveland, the longest interstate in the U.S. connecting Seattle and Boston, and Interstate 80 that connects San Francisco and New York City. Cleveland and Chicago are the only two major cities that can access both I-80 and I-90, which go right through downtown Cleveland.

Commuting by Car

Cleveland enjoys a robust road network with some of the shortest commute times in the U.S.⁴ Clevelanders spend by far the fewest annual peak hours wasted in congestion. **Cleveland ranks 65th on INRIX's Global Traffic Scorecard for worst congestion.** Clevelanders spend less than half the amount of time sitting in congestion as those in Detroit, Pittsburgh or Nashville, who are ranked in the top 25 for worst congested cities. In Boston, Chicago or Seattle, you'll sit in traffic three-and-a-half times longer, as they rank in the top 10 for worst congestion!

The morning and evening "rush hours" in the area last only 1.5 hours—much less than those of other metro areas. During peak hours, the average driver is delayed only three to four minutes longer than a typical commute.

PUBLIC TRANSIT IN CLEVELAND

Public transportation is a great option for locals and visitors alike.⁵ Cleveland has long been a trailblazer in the realm of public transportation and was the FIRST to connect an international airport to a city's Downtown by rail. Additionally, downtown Cleveland's Union Terminal is part of the Tower City complex, which includes the iconic Terminal Tower giving immediate access to all transit services. Amtrak passenger trains are also accessed downtown, a few blocks away.

⁴ Highway Connectivity – 90 Minute Drive Time Map

⁵ Population Coverage – Proposed Cleveland HQ Map

Transit is an important aspect of Cleveland's transportation network, and choices are vital to the health and vibrancy of the region. Public transit options reduce congestion, reduce personal transportation costs, and make for cleaner air. It is also key to Cleveland's ability to provide job access that benefits both employers and employees alike.

Clevelanders enjoy the largest transit network in the state of Ohio, larger than the rest of the state combined—and one of the largest in the United States. Included in this robust system is light rail, heavy rail, bus, Bus Rapid Transit (BRT), trolley, water taxi and more!

Cleveland's network of heavy rail is the largest of any city its size and provides over 6 million trips each year.⁶ The city is a leader in Bus Rapid Transit (BRT) providing over 5 million trips and is the fourth largest in the nation. Cleveland's BRT received the highest ranking of "silver" from the Institute for Transportation and Development Policy, one of only two U.S. cities to do so while none received gold. In 2013, the international organization ITDP awarded the Cleveland Healthline the best BRT award in the country.

Access to transit is equally robust. In the metro area, 1.3 million residents walk less than half a mile, or drive five miles or less, to access transit services.⁷ Cleveland provides more than 50 million transit trips each year, nearly doubling the number of trips provided by competing cities like Detroit and Charlotte. And Cleveland provides more trips than all other Ohio cities combined, including both Columbus and Cincinnati.

Future Transit

The future of transit—particularly rail—is bright. Under a recent plan by the Northeast Ohio Areawide Coordinating Agency (NOACA), which is the metropolitan planning organization for greater Cleveland, **a future rail network expansion could more than triple capacity.** As part of this visionary plan, the current 37 miles of rail will expand to 111 miles, and the number of stations will increase from 50 to 162.⁸ This will make the current system one that can grow with new or expanding businesses.

In addition, NOACA has completed a Transit Oriented Development (TOD) plan to increase ridership and promote development around transit. This plan promotes a mixture of housing, retail, services, workplaces, and open space within walking distance of transit. TOD is most important in providing job access by connecting to existing facilities. Local agencies are actively working to develop sites that will offer thousands of new housing units and mixed-use developments within 2.5 miles of downtown Cleveland. Although Greater Cleveland already has a rich history of development near transit, this plan shows that the region is using it as a tool to influence future development.

ACTIVE TRANSPORTATION IN CLEVELAND (Biking & Walking)

Active transportation (biking and walking) is another important piece of the transportation system, where transportation and health outcomes are linked. And greater Cleveland has great facilities throughout.

The region currently enjoys more than 860 miles of trails and other facilities for biking and walking.⁹ Additionally, many hundreds of miles are planned.

⁶ Walk Accessibility to Rail Stations Map

⁷ Drive Accessibility to Park N Ride Locations Map

⁸ Proposed Future Rail Lines Map

⁹ Bicycle Network Map

Cleveland's bicycle commute rate is more than double the state average and has increased 238 percent since 2000. Cleveland is ranked seventh among U.S. cities where bicycle commuting is growing the fastest.

In addition to bicycle-specific facilities, bicycling has been increasingly integrated with transit in the Cleveland area. As early as the 1990's, the region's transit authority instituted a program which allows bicyclists to load their bike onto a rack located on the front bumper of every bus. This progressive innovation made GCRTA a national leader as one of the first transit systems to add bike racks. Bicycles are also allowed on Bus Rapid Transit (BRT) buses and trains.

In 2016, a bike share program was launched in the City of Cleveland, expanding easy access to bicycles by tourists and commuters alike. The city's bike share system includes 250 bikes at 29 fixed stations and seven "drop zones."¹⁰

Downtown Cleveland is compact and extremely walkable, boasting wide, human-scale sidewalks.¹¹ **Downtown's "Walk Score" is 91** – making it a "walker's paradise" in which daily errands do not require a car. This designation is the highest awarded by Walk Score. Cleveland has several other neighborhoods that also receive high rankings for most or all daily errands being within a walkable distance.

PROXIMITY TO MAJOR ATTRACTIONS, ENTERTAINMENT & DINING IN CLEVELAND Cleveland is home to many notable amusement parks, restaurants, art galleries, museums, sporting venues, theatres, beaches, casinos, shopping, and more—all accessible by foot, bike, bus, train or car!¹² Notable venues and attractions within a short distance of Downtown Cleveland's Tower City Union Terminal include:

- » **Cleveland Museum of Art** (5 miles, 15 minutes by transit (BRT) or bikeride) – The #2 museum in the nation as ranked by Business Insider in 2016.
- » **Playhouse Square** (less than one mile, 15 minute walk or 5 minute by transit (trolley ride) – The largest performing arts center in the United States outside of New York City.
- » **Rock and Roll Hall of Fame** (1.1 miles, 20 minute walk or 7 minutes by transit Waterfront Line Light Rail) – Since its opening in 1995 the Rock and Roll Hall of Fame has had more than 10 million visitors.
- » **Professional Sports Venues** (all less than .7 miles and 10 minute walk) – Downtown Cleveland is home to three professional sports franchises, all of which make their homes Downtown.
- » **Cedar Point Amusement Park** (63 miles, 70 minute drive) – Consistently ranked as a top amusement park in the world.
- » **Pro Football Hall of Fame** (57 miles, 70 minute drive) – Recognized worldwide as America's premier sports Hall of Fame, it is an exhilarating museum and attraction.

¹⁰ Bicycle Coverage Downtown Cleveland Map

¹¹ Sidewalk Coverage Downtown Cleveland Map

¹² Entertainment Options – 90 Minute Drive Time, Entertainment Options Downtown Cleveland, and Major Attractions – 90 Minute Drive Time Maps

MOVING FREIGHT IN CLEVELAND

Greater Cleveland offers easy access to all forms of freight movement, making shipping efficient and inexpensive.¹³ Over 300 million tons of goods were shipped into, out of, and through the region in 2015. Two major north-south interstates and one east-west interstate are located in Downtown Cleveland, with a second east-west route just twenty minutes away. These interstates as well as main arterials experience some of the lowest congestion levels in the country, helping businesses reliably plan goods movement and keep costs down.

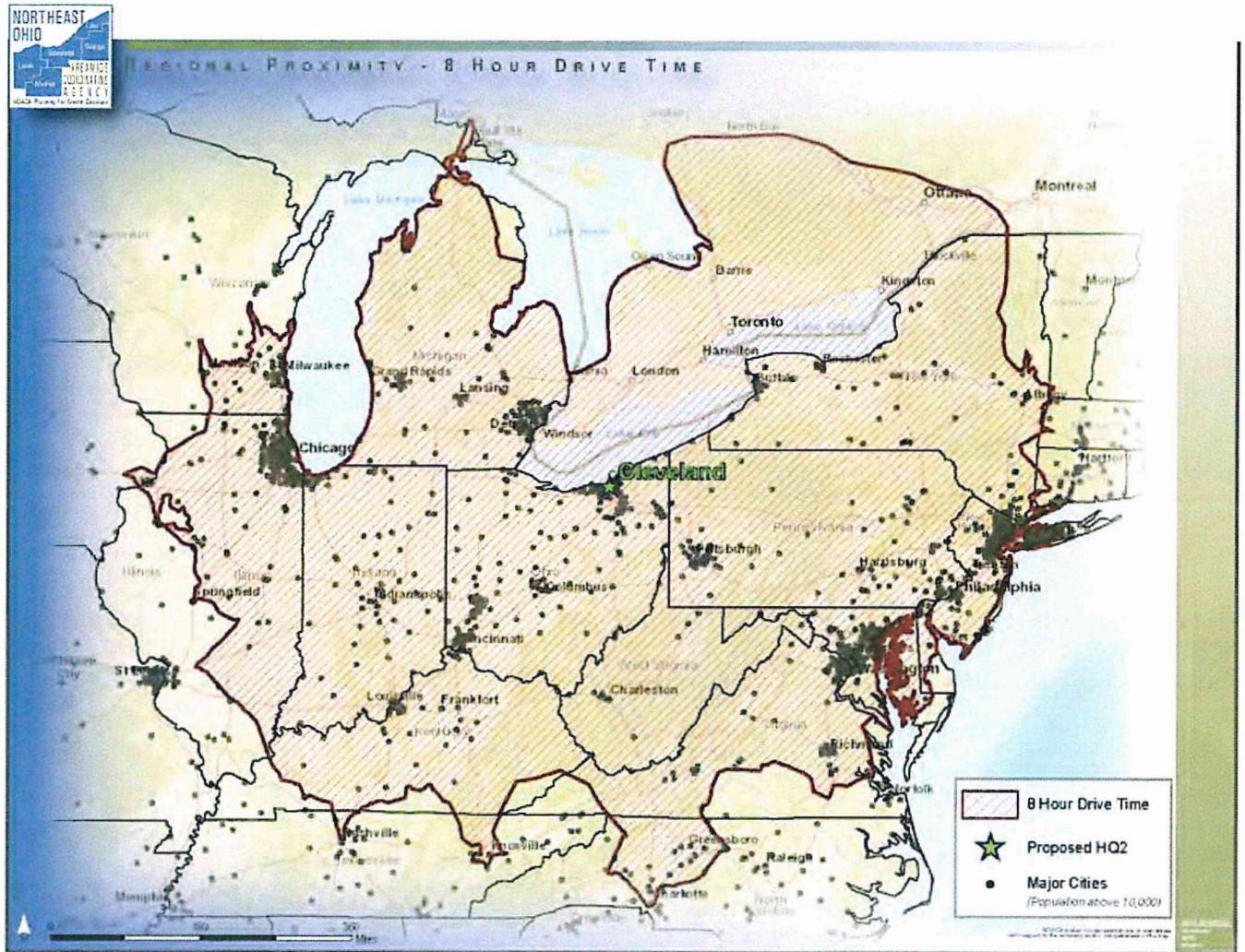
Cleveland Hopkins International Airport offers cargo service to all major metros for time-sensitive shipping. **The Port of Cleveland is also located Downtown and provides the only direct, scheduled containerized shipping service to Europe from the Great Lakes.** This route helps businesses reduce the costs of driving and avoid the regular congestion at east coast ports. CSX and Norfolk Southern both have railyards within 20 minutes of Downtown.

¹³ Freight Network Map

**TRANSIT PASSES
POTENTIAL INCENTIVE OPTIONS
PROJECT AMAZON**

Year	# of Employees	Full Cost Price of Passes \$1,140 each	Value of Incentive	
				25% Discount on Passes
1	2,900	\$3,306,000		\$826,500
2	5,800	\$6,612,000		\$1,653,000
3	8,700	\$9,918,000		\$2,479,500
4	11,600	\$13,224,000		\$3,306,000
5	14,500	\$16,530,000		\$4,132,500
6	19,720	\$22,480,800		\$5,620,200
7	24,940	\$28,431,600		\$7,107,900
8	30,160	\$34,382,400		\$8,595,600
9	35,380	\$40,333,200		\$10,083,300
10	40,600	\$46,284,000		\$11,571,000
11	42,480	\$48,427,200		\$12,106,800
12	44,360	\$50,570,400		\$12,642,600
13	46,240	\$52,713,600		\$13,178,400
14	48,120	\$54,856,800		\$13,714,200
15	50,000	\$57,000,000		\$14,250,000
SUBTOTAL (Years 1-5)		\$49,590,000		\$12,397,500
SUBTOTAL (Years 1 - 10)		\$221,502,000		\$55,375,500
TOTAL (Years 1-15)		\$485,071,140		\$121,267,785

THE GREATER CLEVELAND METROPOLITAN REGION



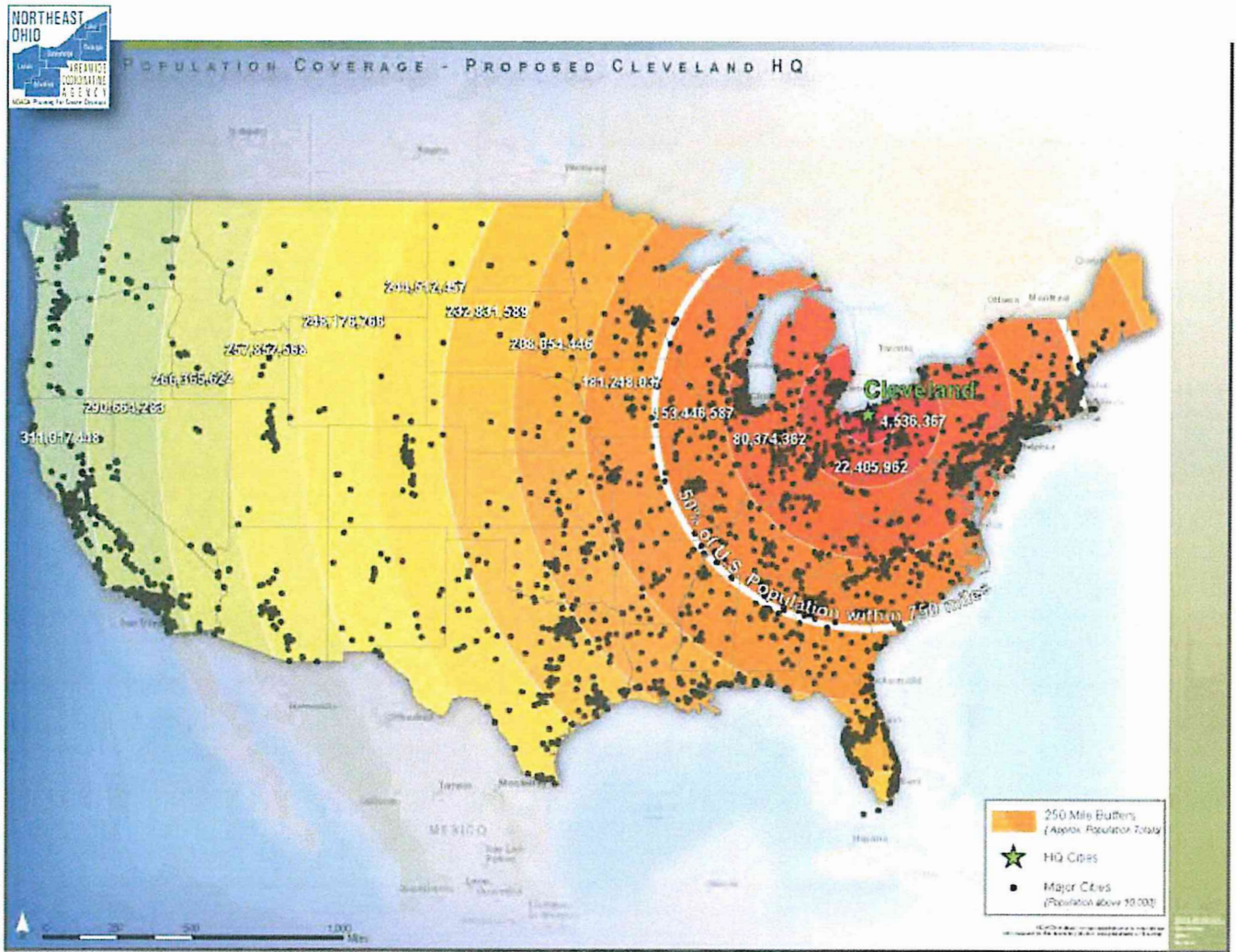
The Greater Cleveland Metropolitan Area is ideally situated for a large corporate headquarters. Cleveland is within an eight hour drive, or approximately 500 miles¹ to

- » 56% of *Fortune* 500 US Headquarters
- » 44% of US Households
- » 43% of US Population
- » 45% of US Effective Buying Income
- » 46% of US Earnings
- » 49% of US Manufacturing Employment

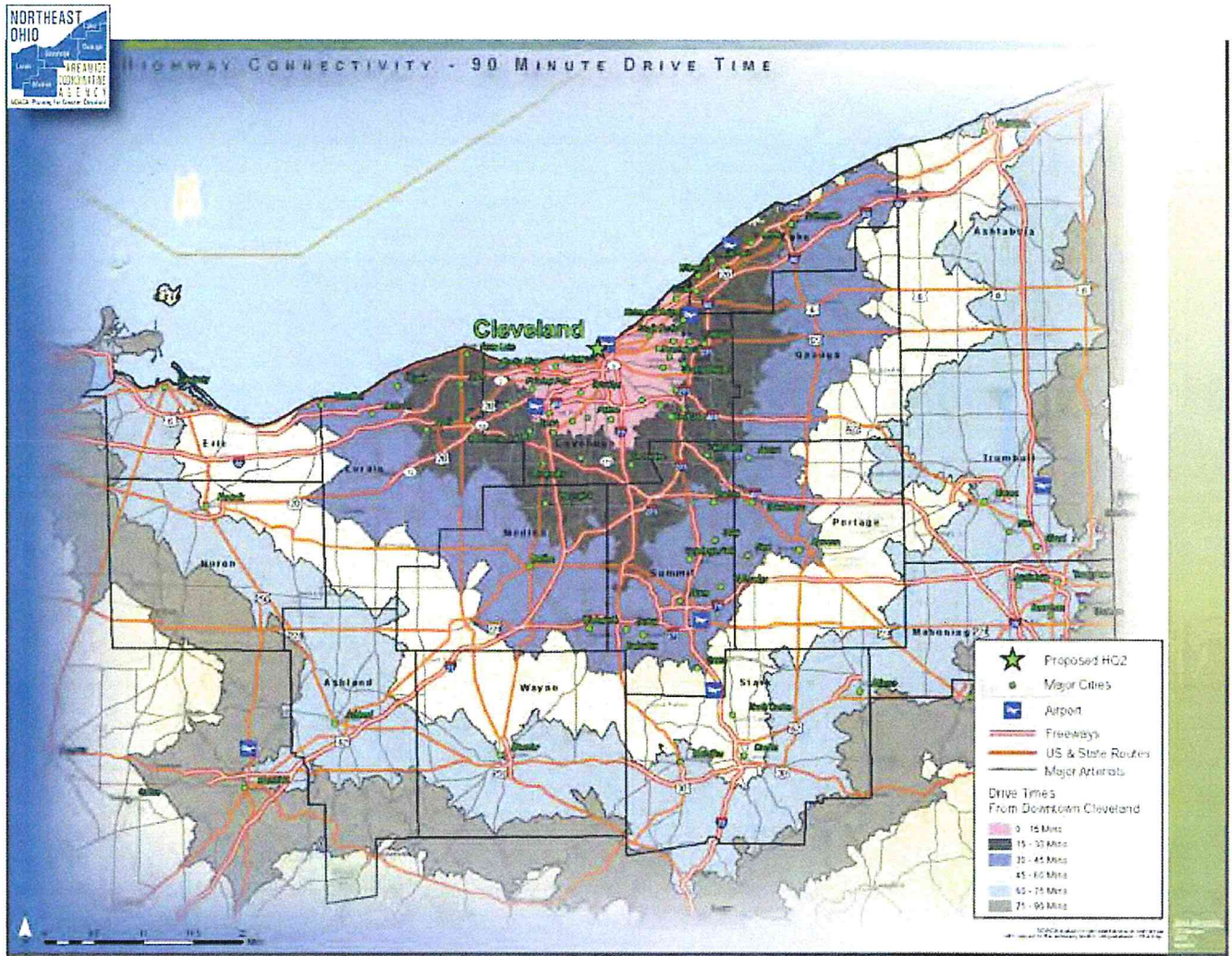
The metro area is also home to 22 *Fortune* 1000 companies headquartered in Northeast Ohio.²

¹ <http://rethinkcleveland.org/Strategic-Advantages.aspx>

² <http://proximityone.com/metros/2013/cbsa17460.htm>

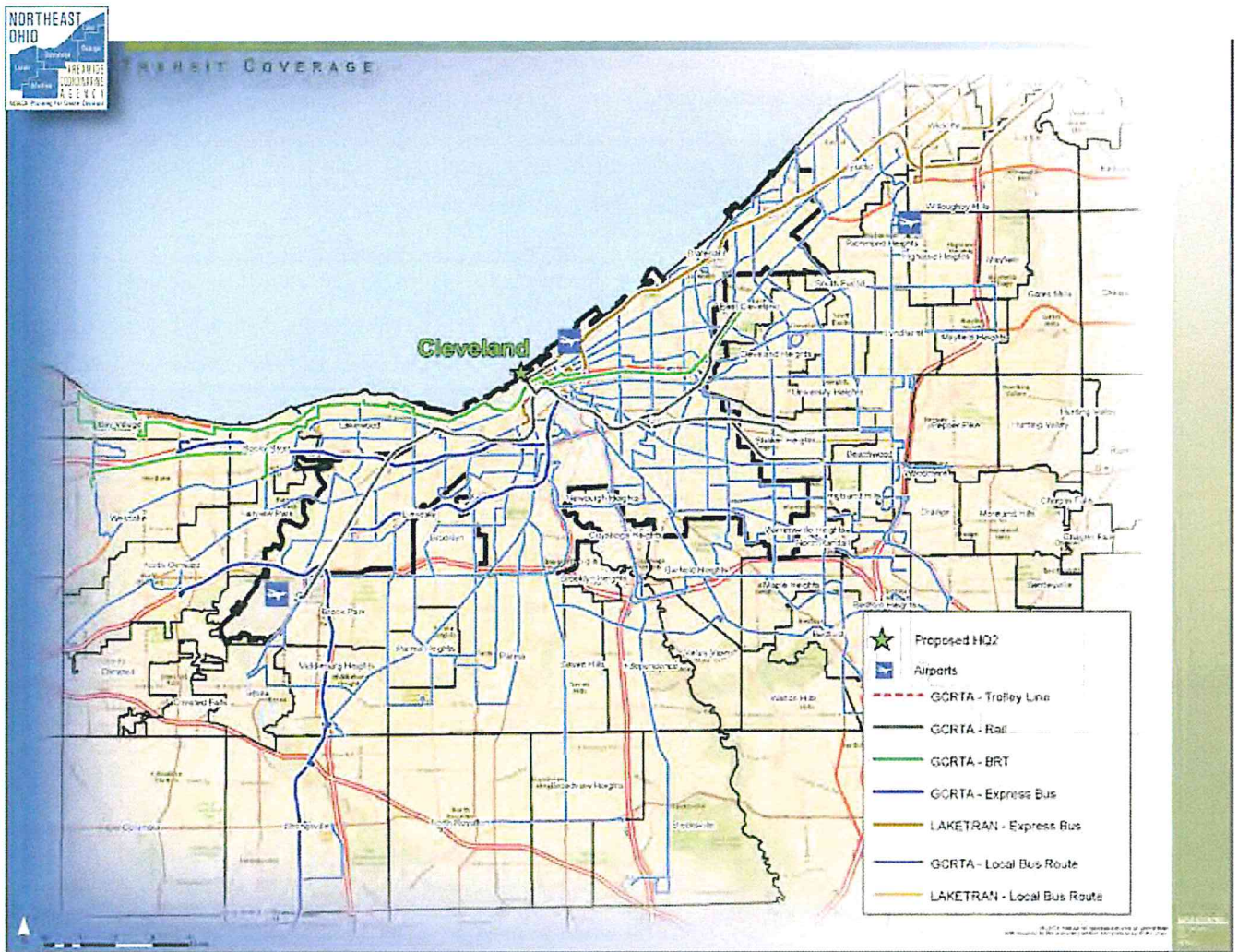


Many major US and Canada urbanized areas are on the east or west coasts and the Greater Cleveland Metropolitan Area provides an optimal location in terms of total distance and distribution coverage from both coasts. The map shows the population in 250 mile radii in relation to Cleveland. The major cities in the east or west coasts, such as Seattle, are not optimally located and are far from the other side and do not provide balanced access coverage to major metropolitan areas.



The greater Cleveland metropolitan area enjoys a very robust transportation system. The area is home to 10,978 miles of interstate, arterial and local roads. The interstates in the region are:

- I-71 Interstate 71
- I-77 Interstate 77
- I-80 Interstate 80 (Ohio Turnpike)
- I-90 Interstate 90
- I-271 Interstate 271
- I-277 Interstate 277
- I-480 Interstate 480
- I-490 Interstate 480
- SR 176 (Interstate look-alike)
- US 422 (Interstate look-alike)



Interstate 90 is a transcontinental freeway and the longest interstate highway in the United States connecting Seattle, WA and Boston, MA.

Interstate 80 is the only toll road in the region.

The region also has an extensive arterial system, with 2,588 miles of arterial roadways.

The AM or PM congested peak periods in the Greater Cleveland Metropolitan Area lasts only 1.5 hours and is much less than those of any major metropolitan area. The average daily delay per capita due to the traffic congestion in the Cleveland Metropolitan Area is only 3 to 4 minutes.

Transit

Highways are only part of the story. Transit is an important aspect of the transportation network, and mobility choices are vital to the health and vibrancy of a region. Public transit options reduce congestion, personal transportation costs, and carbon output. The region's transit is the largest system in Ohio with:

GCRTA - Cleveland and Cuyahoga county

Bus - 34,426 trips total including local and express

» Local - 1,268 miles

» Express - 377 miles

BRT- 4,880,729 trips - 68.9 miles

Light Rail - 2,485 trips - 23.2 miles

Heavy Rail - 6,419 trips- 18.9 miles

Trolley - 1,530,698 trips - 12 miles

Water Taxi - 1 route (new service, no date yet)

Total trips(less the trolley trips): 43,119 trips

Laketran - Lake County

454,000 local bus trips

162,348 commuter bus trips into Downtown Cleveland

Akron Metro - Summit County

100,779 commuter bus trips into Downtown Cleveland

The Cleveland Ohio urbanized area is the 29th largest transit travel ranked by passenger trips in the United States.³

The Cleveland Ohio urbanized area is the 15th largest heavy rail agency ranked by passenger trips (over 6 million) in the United States.⁴

The Cleveland Ohio urbanized area is the 4th largest Bus Rapid Transit (BRT) agency ranked by passenger trips (over 5 million) in the United States.⁵

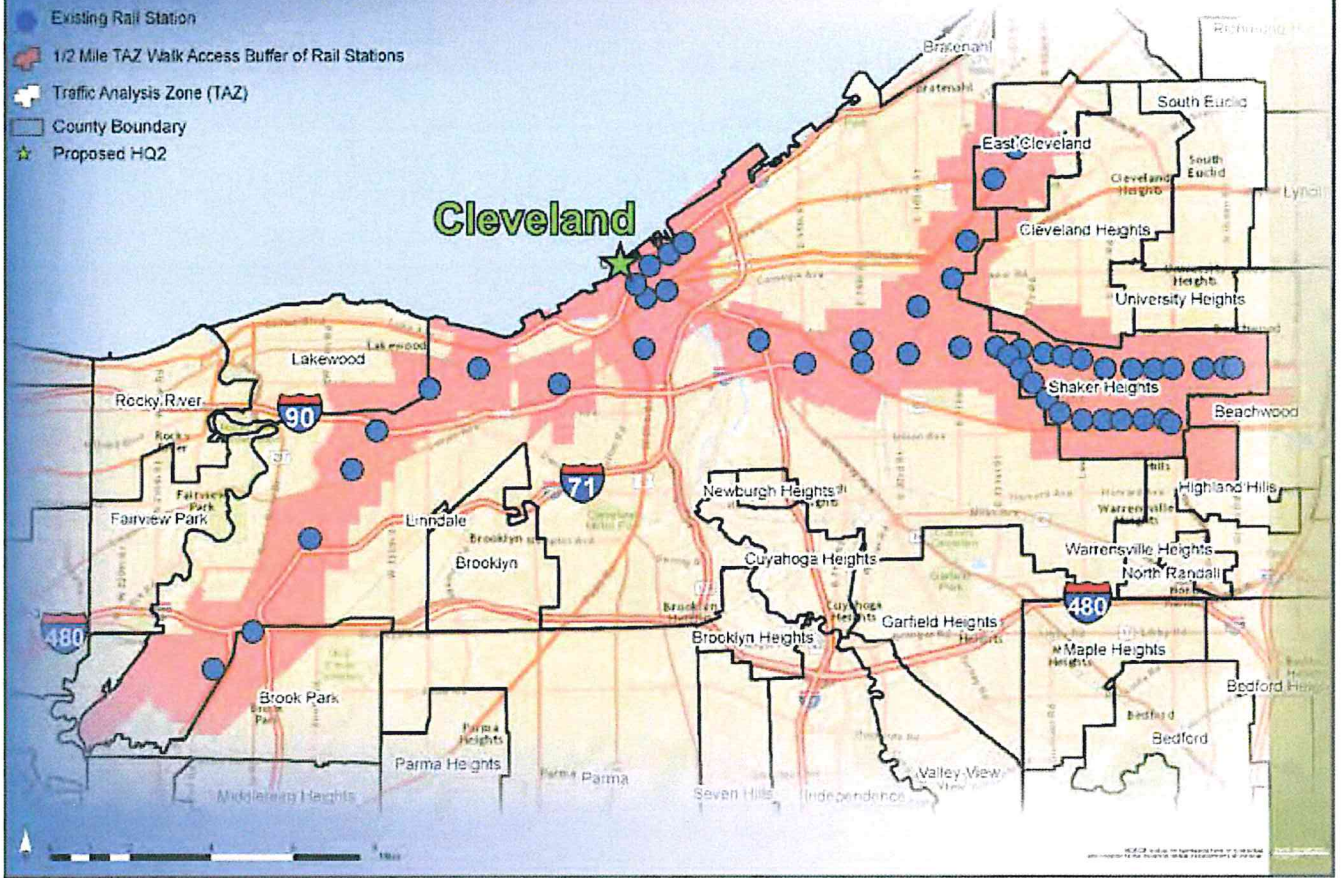
³ <http://www.apta.com/resources/statistics/Documents/FactBook/2016-APTA-Fact-Book.pdf>

⁴ <http://www.apta.com/resources/statistics/Documents/FactBook/2016-APTA-Fact-Book.pdf>

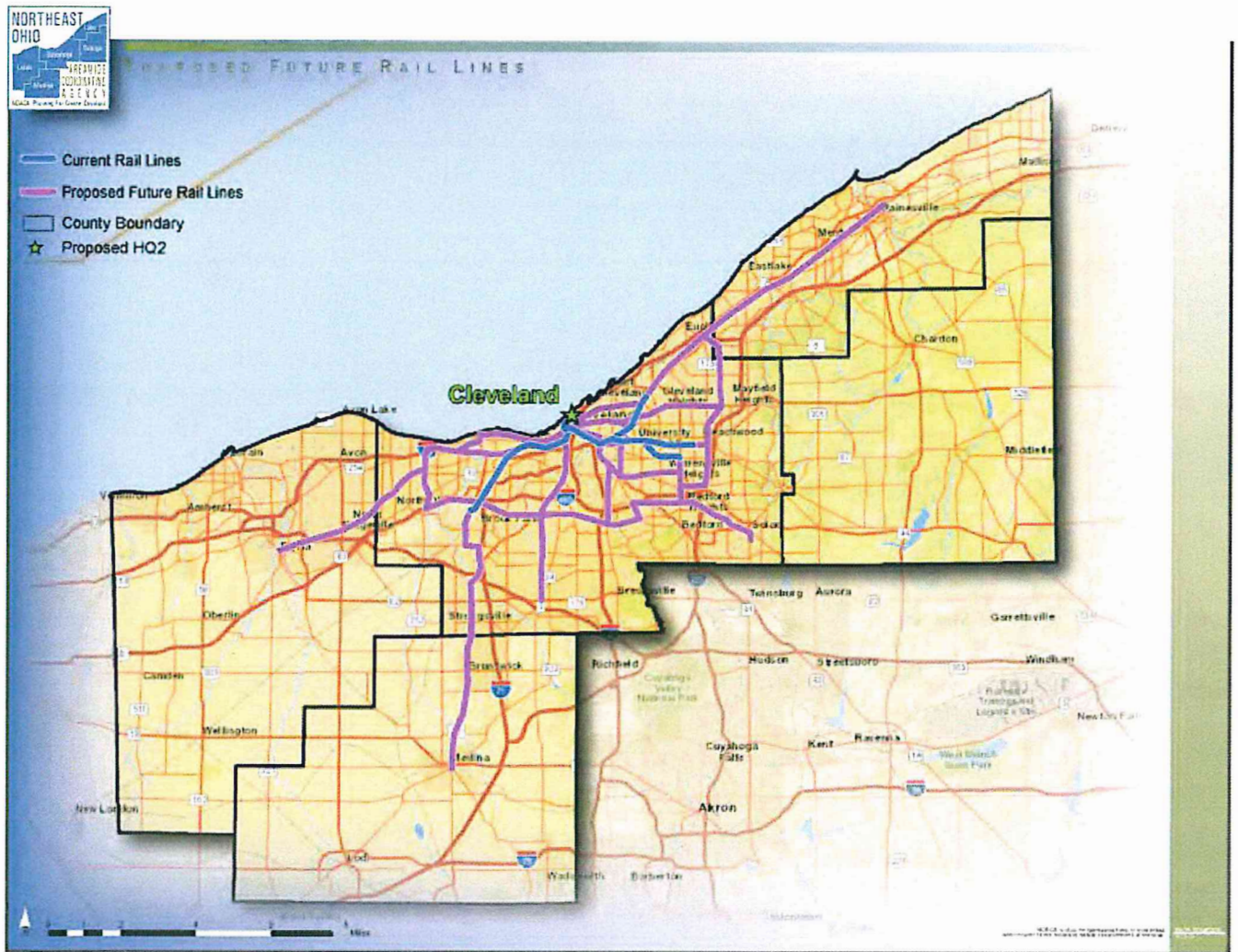
⁵ <http://www.apta.com/resources/statistics/Documents/FactBook/2016-APTA-Fact-Book.pdf>



WALK ACCESSIBILITY TO RAIL STATIONS



FUTURE TRANSIT



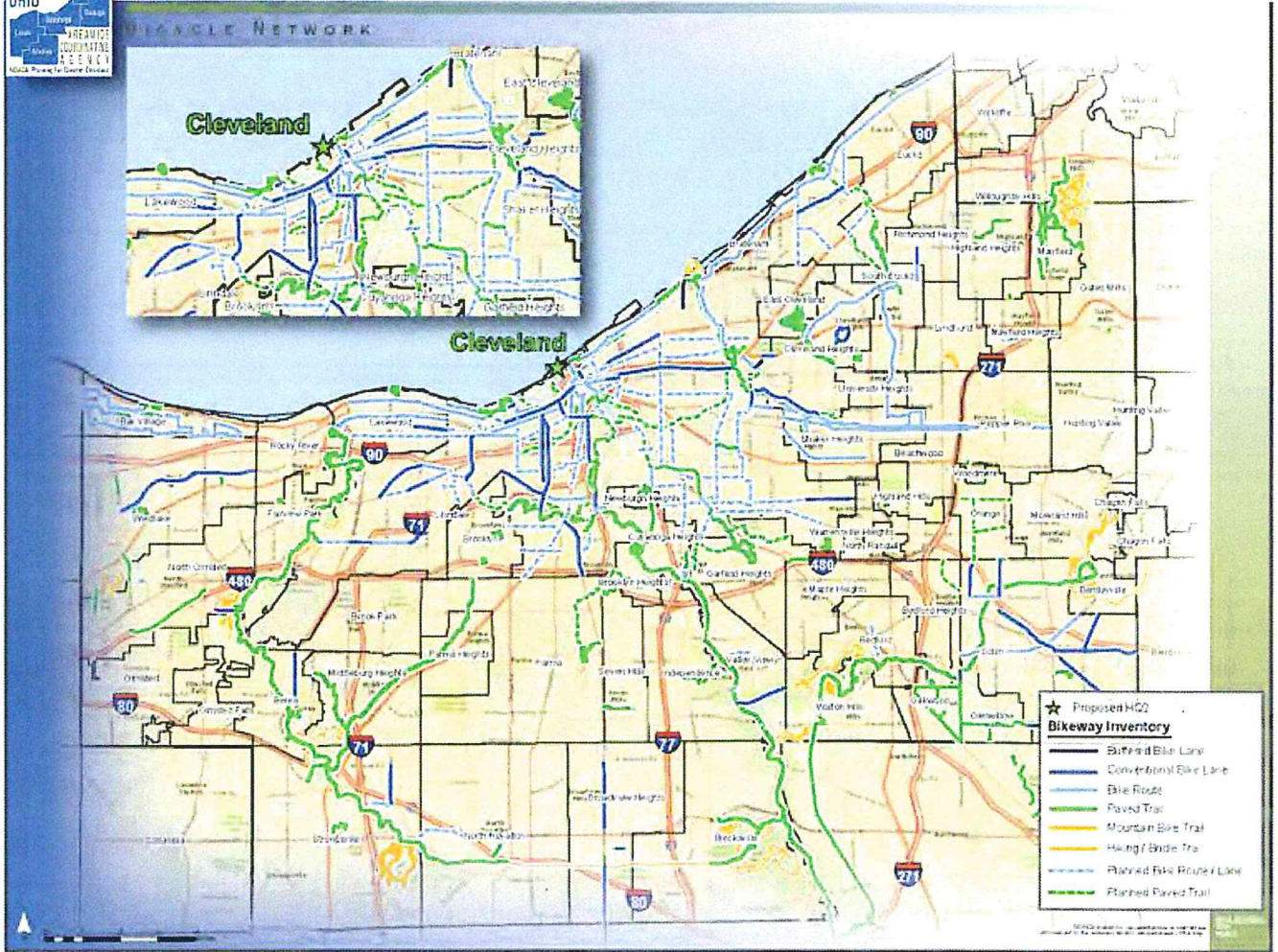
The future transit plan, as documented in the Northeast Ohio Areawide Coordinating Agency's (the greater Cleveland Metropolitan Planning Organization) Long Range Transportation Plan, illustrates the future rail network expanding from the current 37 miles of rail to 111 miles, and the number of stations increasing from 50 to 162. This will make the current good system great, and a system that can grow with Amazon.

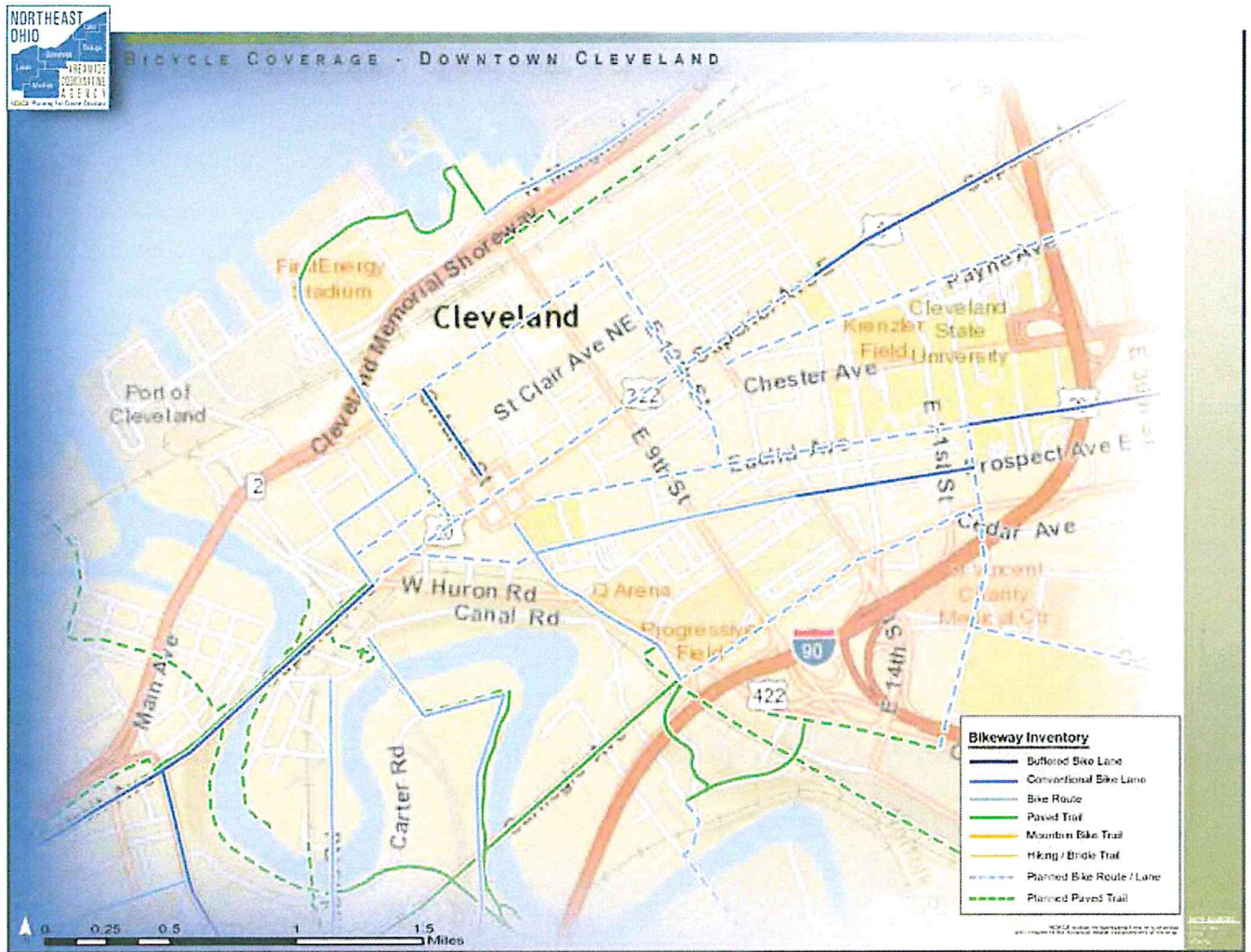
Transit Oriented Development in the Greater Cleveland Region

Transit oriented development (TOD) promotes a mixture of housing, retail, services, workplaces, and open space within walking distance of transit to maximize use of the transit system. By directing compact development to existing developed areas that are well-served by transit, TOD reduces public infrastructure costs over time and preserves regional open space. TOD is most important in providing job access by connecting to existing transit and active transportation facilities.

The Northeast Ohio Areawide Coordinating Agency, in partnership with the Greater Cleveland Regional Transit Authority, has completed a Transit Oriented Development Scorecard and Implementation Plan. This project seeks to help increase ridership and promote development in and around the region's rail stations and high performing bus corridors. Although Greater Cleveland already has a rich history of development near transit, this plan along with other upcoming projects shows that the region is using it as tool to influence future development.

ACTIVE TRANSPORTATION





Active transportation is another important piece of the transportation system, and the greater Cleveland area has great facilities throughout. The Bicycle Network Map displays the existing and proposed bicycle facilities in the region.

The metrics shown below are for existing facilities, but many hundreds of miles of facilities are planned:

On-road facilities – 407 miles

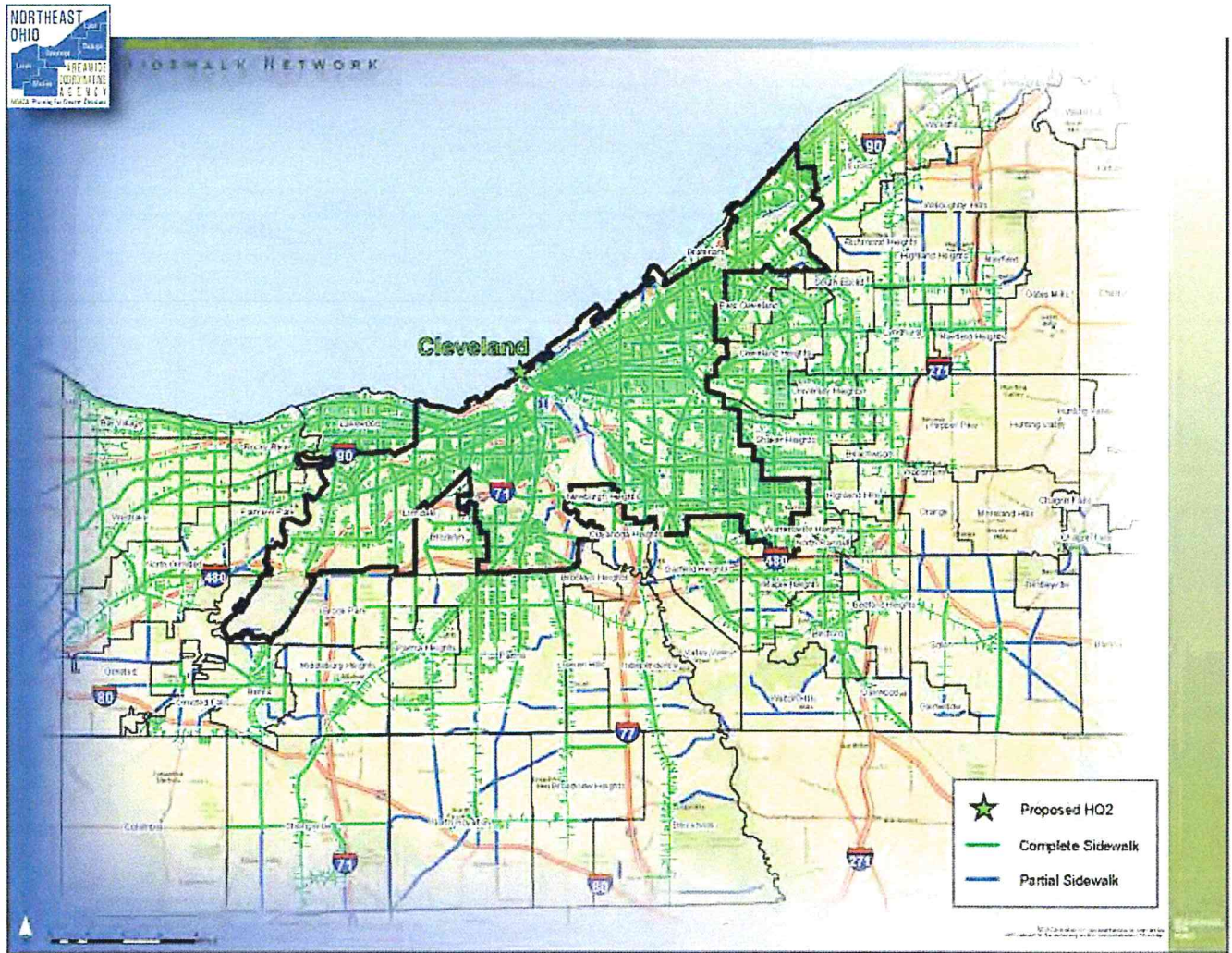
Off-road facilities – 453 miles

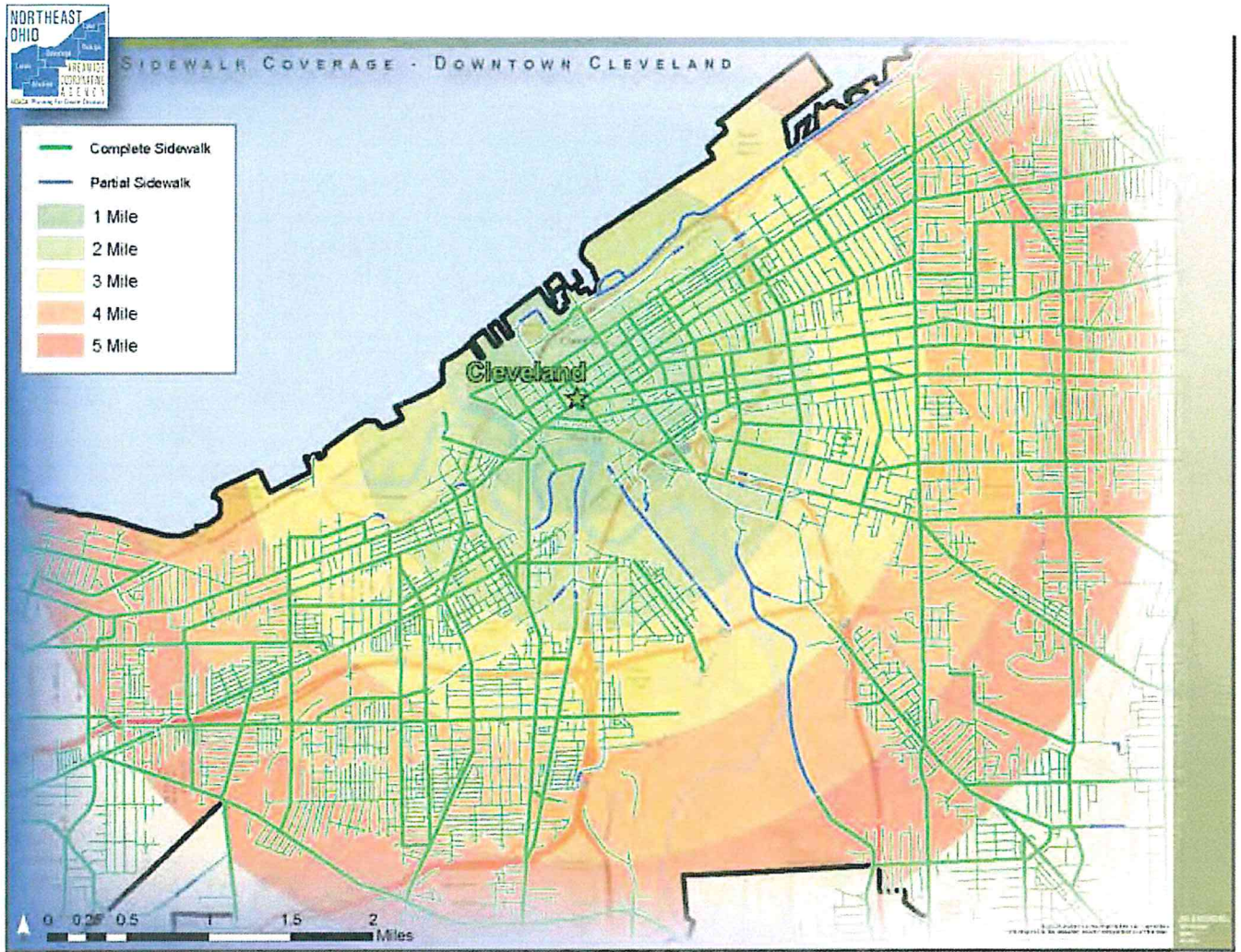
The League of American Bicyclists' report on 2014 American Community Survey Data compared local bicycle mode share with other cities and states.⁶ The City of Cleveland's bicycle commute rate is more than double the state average. Cleveland's rate has also increased 238% since 2000. This now ranks Cleveland 40 of 70 large cities in the United States for bicycle commuting. Cleveland is ranked 7 among a list of 50 cities where bicycle commuting is growing the fastest. A U.S. Census report assessed change in walking and biking commute rates in Cleveland from 2000 to 2010 and determined that both modes saw increases that are statistically significant.⁷

⁶ League of American Bicyclists, "Where We Ride: Analysis of bicycle commuting in American cities," Report on 2014 American Community Survey Data, http://www.bikeleague.org/sites/default/files/Where_We_Ride_2014_data_web.pdf.

⁷ Brian McKenzie, "Modes Less Traveled—Bicycling and Walking to Work in the United States: 2008– 2012," American Community Survey Reports (Washington, D.C.: U.S. Bureau, May 2014), <https://www.census.gov/prod/2014pubs/acs-25.pdf>.

In addition to bicycle-specific facilities, bicycling has been increasingly integrated with transit in Cuyahoga County, via Greater Cleveland Regional Transit Authority's (GCRTA) Rack-N-Roll program, which allows bicyclists to load their bicycle onto a bike rack located on the front bumper of every bus. Bicycles are also allowed on-board Bus Rapid Transit (BRT) buses and GCRTA trains. In 2016, UH Bikes Cleveland Bike Share program was launched in the City of Cleveland, expanding easy access to bicycles by tourists and commuters who drive or take transit downtown or to University Circle. The UH Bikes system initial launch included 250 bikes at 27 fixed stations and 4 "virtual" stations.



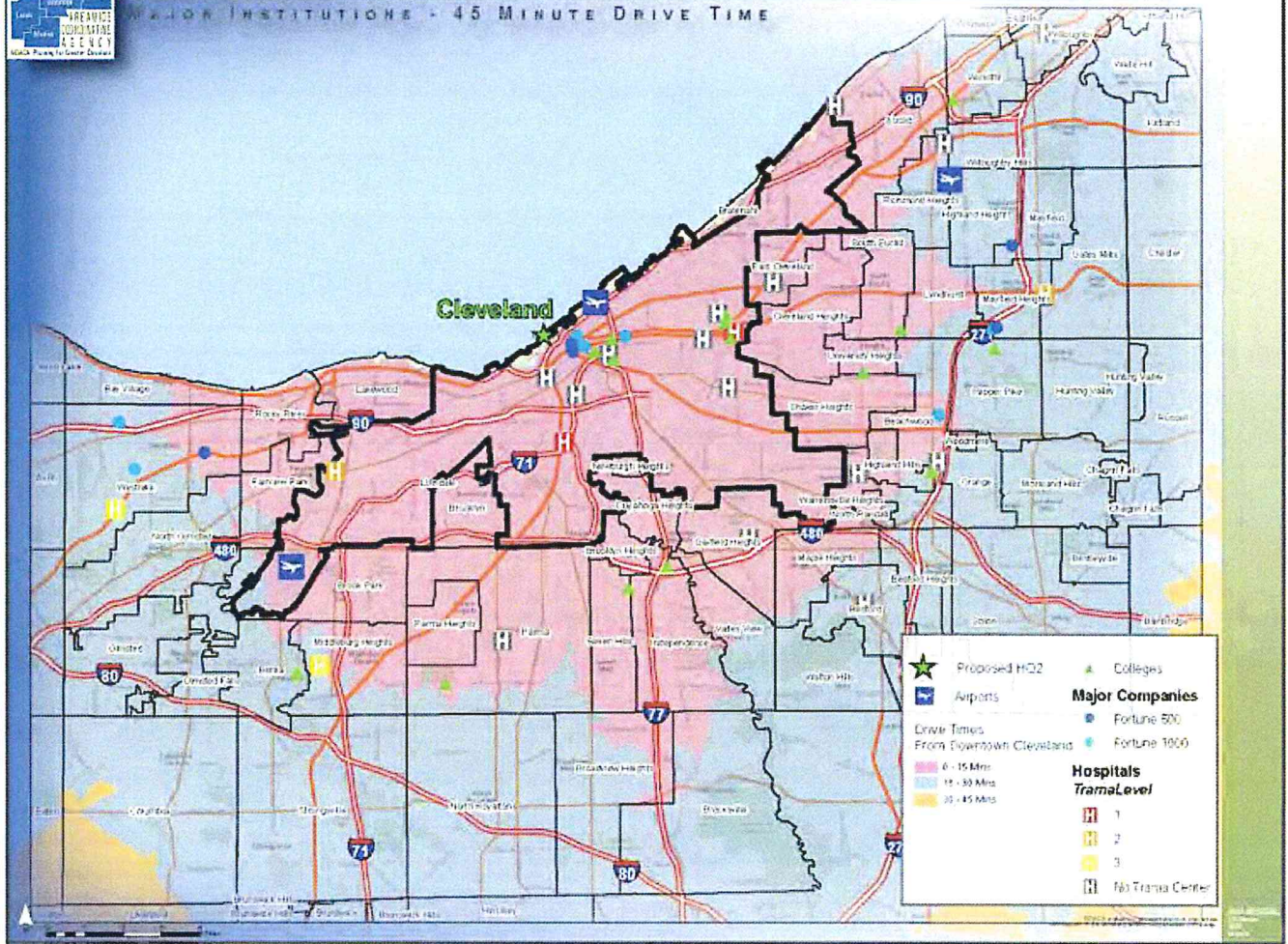


The Sidewalk Network Map displays the existing sidewalks in the region. The region has very good sidewalk coverage with the exception of the exurban and rural areas.

MAJOR INSTITUTIONS



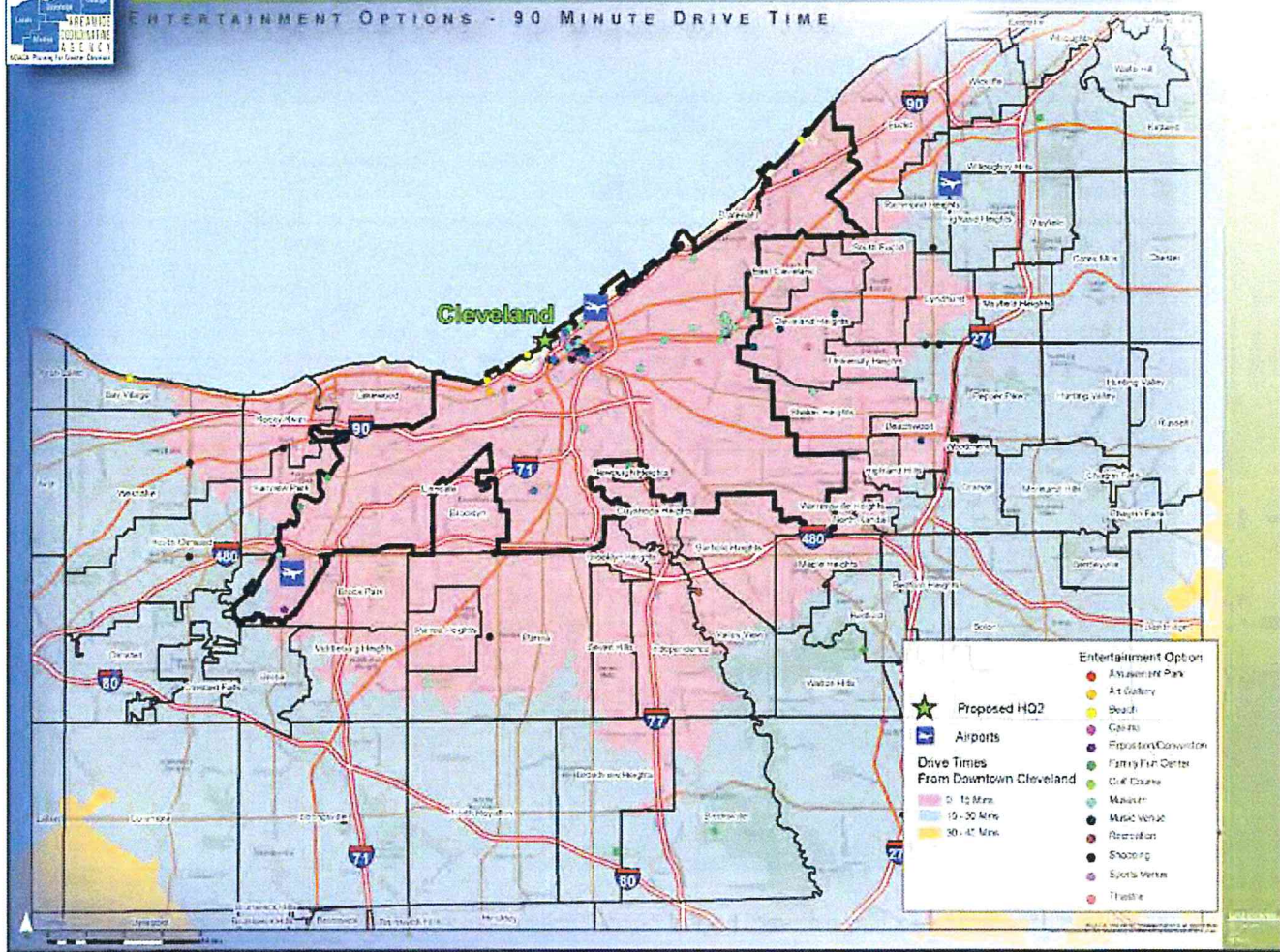
MAJOR INSTITUTIONS - 45 MINUTE DRIVE TIME



MAJOR ATTRACTIONS AND ENTERTAINMENT



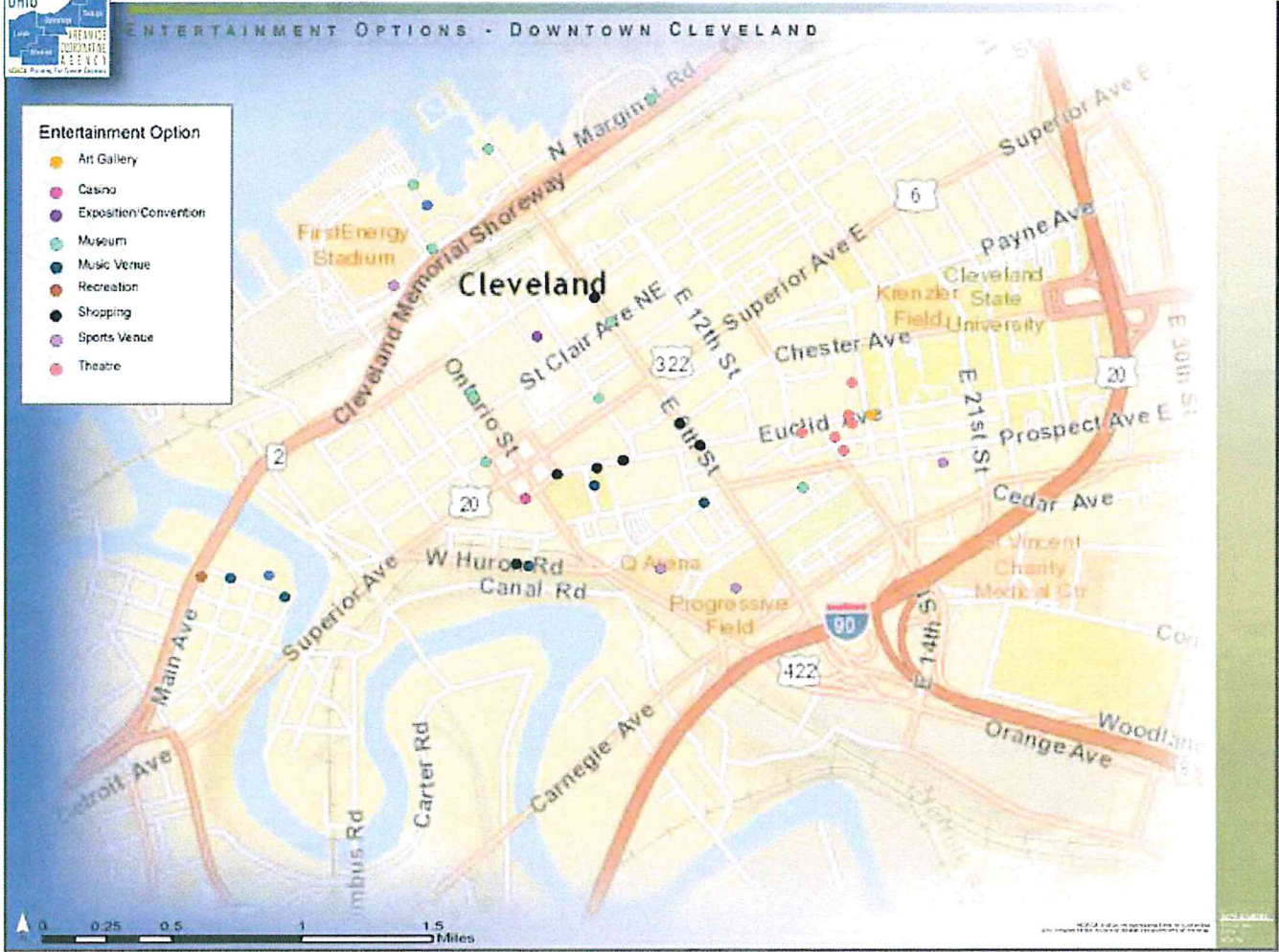
ENTERTAINMENT OPTIONS - 90 MINUTE DRIVE TIME





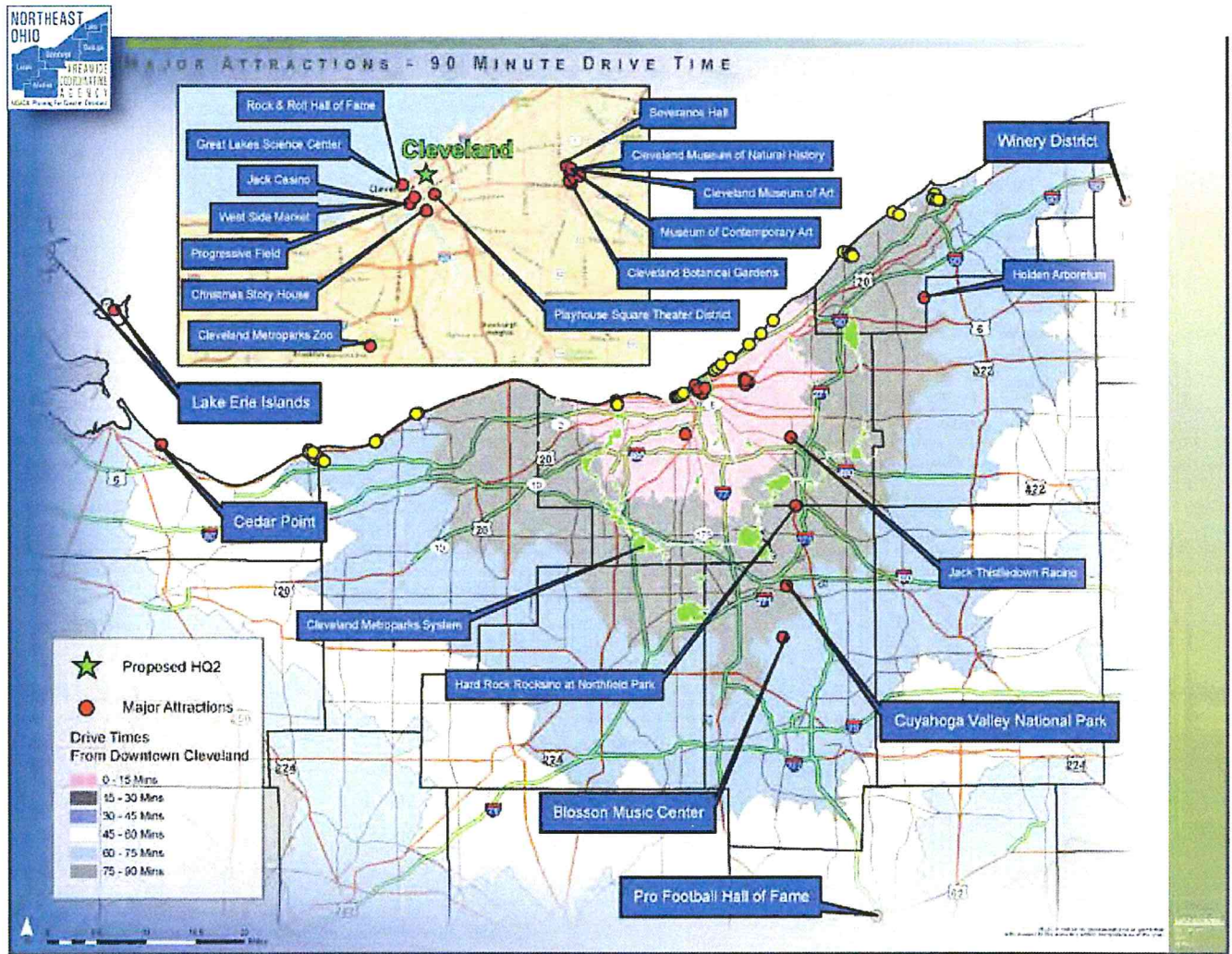
ENTERTAINMENT OPTIONS - DOWNTOWN CLEVELAND

- Entertainment Option**
- Art Gallery
 - Casino
 - Exposition/Convention
 - Museum
 - Music Venue
 - Recreation
 - Shopping
 - Sports Venue
 - Theatre



0 0.25 0.5 1 1.5 Miles

© 2008 ESRI. All rights reserved. This software is registered under the name of the user.



Cleveland is home, or within short travel distance, to a vast network of entertainment venues and attractions. Entertainment options show proximity of downtown Cleveland to entertainment options including amusement parks, art galleries, museums, sporting venues, theatres, beaches, a casino, and regional shopping facilities. Notable venues and attractions with drive range from downtown Cleveland include:

- » Cleveland Museum of Art (0-15 minutes) – Ranked the #2 museum in the nation by Business Insider in 2016.
- » Playhouse Square (0-15 minutes) – The largest performing arts center in the United States outside of New York. (Only Lincoln Center in New York City is larger.) Playhouse Square welcomes more than 1 million guests to 1,000+ performances and events each year.
- » Rock and Roll Hall of Fame (0-15 minutes) – Since its opening in 1995 the Rock and Roll Hall of Fame has had more than 10 million visitors.
- » Major League Sports Franchises – Cleveland is home to three major league sports franchises, the NBA champion Cleveland Cavaliers, MLB American League champion Cleveland Indians, and the Cleveland Browns. The Cleveland region is also home to the Lake Erie Monsters minor league hockey team, Cleveland Gladiators indoor football team, and several minor league and semi-pro baseball teams.

- » Cedar Point Amusement Park (45-60 minutes) – Consistently ranked as a top amusement park in the world by theme park and roller coaster enthusiasts. Amusement Today ranks Cedar Point as the second best amusement park in the world.

Cleveland is home to numerous restaurants and bars, accessible by foot, bike, train, and car. Cleveland is quickly becoming one of the best food cities in the America and boasts restaurants and chefs that are nationally renowned. As such, in 2015 TIME magazine ranked Cleveland 7th for Americas Best Food Cities (<http://time.com/3746147/americas-best-food-cities/>) based on rankings from its Travel and Leisure readers.

